



CLASS V COMMERCIAL BRAKE TESTERS

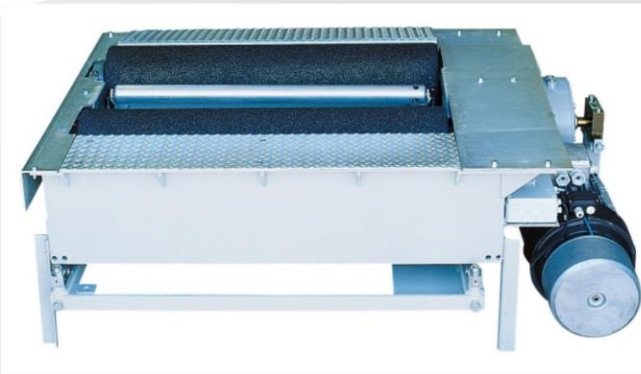
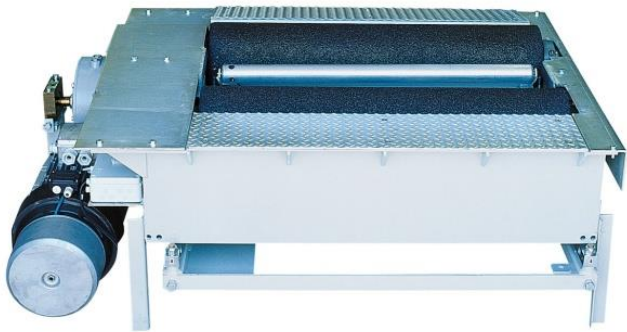
(PFK600T/MOTVPF – PFK500T/MOTVPF)

CLASS V COMMERCIAL BRAKE TESTERS



BRAKE TESTERS FOR TRUCKS AND BUSES

The system is fully modular and is composed by a PC based control unit controlling a subsystem made of a **roller brake tester**



ROLLER BRAKE TESTER BENCHES

CONTROL
UNIT



CONTROL UNIT

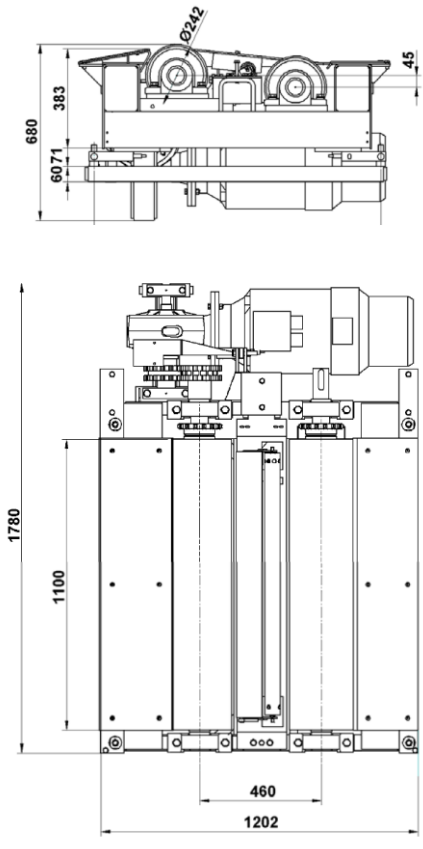


PC-base control unit with closed cabinet including:

- Complete electric system
- Latest technology PC, with HD
- Keyboard
- A4 printer
- 22'' or 19'' TFT monitor
- Hand-held wireless remote control
- Electrical system for roller bench
- Emergency button
- VOSA database



BRAKE TESTER ROLLER BENCH (Class V only)

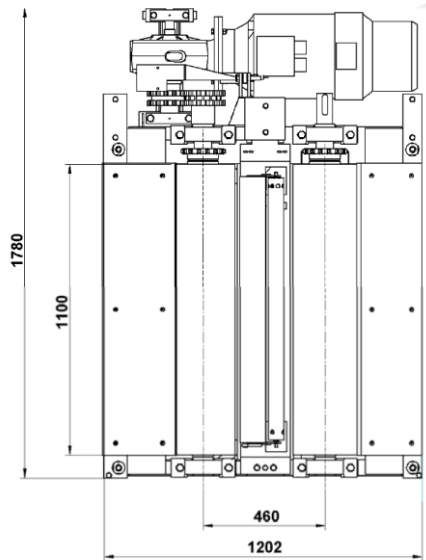
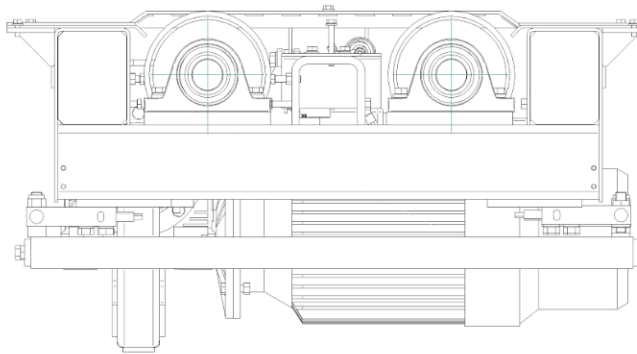


Two separate extra-sturdy roller benches:

- Roller length 1100 mm
- Roller diameter 242 mm
- Max transit weight per axle 20000 kg
- Max test weight per axle 16000 kg
- Motor-power 18+18 kW
- Roller speed 2.2 km/h
- Grip coefficient >0.75
- Max braking force 40000 N
- Silica-granule added resin coating
- Raised rear rollers
- 8-cell weighing unit
- Self-braking motors
- For all Class V purposes

BRAKE TESTER ROLLER BENCH (Class IV+VII approved)

(VARRT600/FLAT + VARRT11/15/4WD)



Two separate extra-sturdy roller benches:

- Roller length 1100 mm
- Roller diameter 242 mm
- Max transit weight per axle 20000 kg
- Max test weight per axle 16000 kg
- Motor-power 18+18 kW
- Roller speed 2.2 km/h
- Grip coefficient >0.75
- Max braking force 40000 N
- Silica-granule added resin coating
- Level rollers (bi-directional) and 4WD option
- 8-cell weighing unit
- Self-braking motors
- For all Class V purposes
- Suitable for Class IV and Class VII too

MANAGEMENT SOFTWARE

The **management software** is extremely user friendly, and graphics are very immediate and clear. The test procedure is carried out according to the relevant VOSA directive.

All test results are measured and summed-up into a comprehensive test report. Customer report data bank feature is also available.

Hereunder some examples of the software main operations.




SPACE s.r.l.
Via Sangano, 48
Trana (TO) ITALY

Calibration report
Brake tester data

Manufacturer		SPACE s.r.l.		Date		Test engineer	
Model		FW 48		Date		Test engineer	
Serial number		10000		Date		Test engineer	
Identification number		000001		Date		Test engineer	
Date of expiry calibration		31/12/2017		Date		Test engineer	
Brake Force Lh							
Before calibration	After calibration	Units	Date	OK	Test engineer		
200	200	kg	31/12/2017	Y	Rocco Meris		
200	200	kg	31/12/2017	Y	Rocco Meris		
Brake Force Rh							
Before calibration	After calibration	Units	Date	OK	Test engineer		
200	200	kg	31/12/2017	Y	Rocco Meris		
200	200	kg	31/12/2017	Y	Rocco Meris		
Weight Lh							
Before calibration	After calibration	Units	Date	OK	Test engineer		
200	200	kg	31/12/2017	Y	Rocco Meris		
200	200	kg	31/12/2017	Y	Rocco Meris		
Weight Rh							
Before calibration	After calibration	Units	Date	OK	Test engineer		
200	200	kg	31/12/2017	Y	Rocco Meris		
200	200	kg	31/12/2017	Y	Rocco Meris		
Side slip							
Before calibration	After calibration	Units	Date	OK	Test engineer		
200	200	kg	31/12/2017	Y	Rocco Meris		
200	200	kg	31/12/2017	Y	Rocco Meris		

Dedicated HGV, trailer and PSV programme with detailed print-out featuring: wheel locks, ovality, bind/drag and imbalance, service, secondary and applied parking test, pass or fail evaluation, on screen prompts for user friendly operation, one man operation, automatic storage of results for future reference.





SPACE s.r.l.
Industria e Ricerca
P.le Europa n. 53
Peg. 011

SPACE s.r.l.
Via Salaria, 48
Trana (TO) Italy

Calibration report

Brake tester data

Manufacturer: **SPACE** S.r.l.
Model: **me 40**
Serial number: **mecc 1000**
Identification number: **mecc 1000**
Date of origin calibration: **31/12/2007**

Brake Force Lh

Before calibration		After calibration		Calibration			
meff	Units	meff	Units	Limits	Date	OK	Test engineer
200	200	200	200	200 ± 200	13/05/2007	✓	Access time
meff	Units	meff	Units	Checks	Date	OK	Test engineer
0	0	0	0	0 ± 0	13/05/2007	✓	Access time
meff	Units	meff	Units	Checks	Date	OK	Test engineer
0	0	0	0	0 ± 0	13/05/2007	✓	Access time

Brake Force Rh

Before calibration		After calibration		Calibration			
meff	Units	meff	Units	Limits	Date	OK	Test engineer
200	200	200	200	200 ± 200	13/05/2007	✓	Access time
meff	Units	meff	Units	Checks	Date	OK	Test engineer
0	0	0	0	0 ± 0	13/05/2007	✓	Access time
meff	Units	meff	Units	Checks	Date	OK	Test engineer
0	0	0	0	0 ± 0	13/05/2007	✓	Access time

Weight Lh

Before calibration		After calibration		Calibration			
meff	Units	meff	Units	Limits	Date	OK	Test engineer
200	200	200	200	100 ± 200	13/05/2007	✓	Access time
meff	Units	meff	Units	Checks	Date	OK	Test engineer
0	0	0	0	0 ± 0	13/05/2007	✓	Access time
meff	Units	meff	Units	Checks	Date	OK	Test engineer
0	0	0	0	0 ± 0	13/05/2007	✓	Access time

Weight Rh

Before calibration		After calibration		Calibration			
meff	Units	meff	Units	Limits	Date	OK	Test engineer
200	200	200	200	100 ± 200	13/05/2007	✓	Access time
meff	Units	meff	Units	Checks	Date	OK	Test engineer
0	0	0	0	0 ± 0	13/05/2007	✓	Access time
meff	Units	meff	Units	Checks	Date	OK	Test engineer
0	0	0	0	0 ± 0	13/05/2007	✓	Access time

Side slip

Before calibration		After calibration		Calibration			
meff	Units	meff	Units	Limits	Date	OK	Test engineer
meff	Units	meff	Units	Checks	Date	OK	Test engineer
meff	Units	meff	Units	Checks	Date	OK	Test engineer

REMOTE CONTROL APP

The TEST LANE Connect APP allows remote visualization and control of the complete system on a smartphone or tablet. The token file (right to use the APP) is code SRT128.



FOUNDATION FRAME KIT

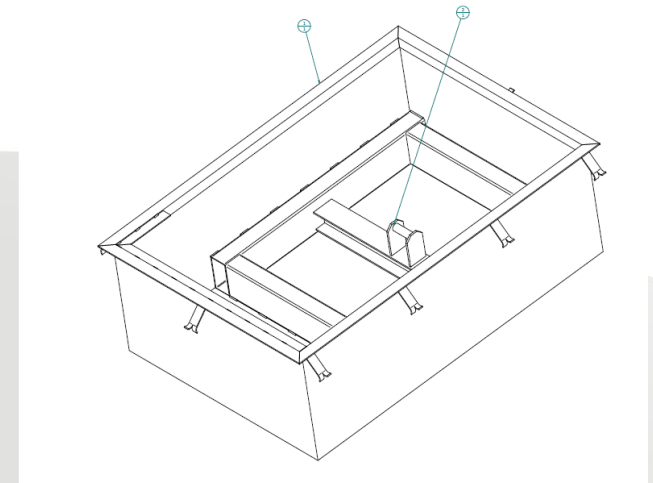
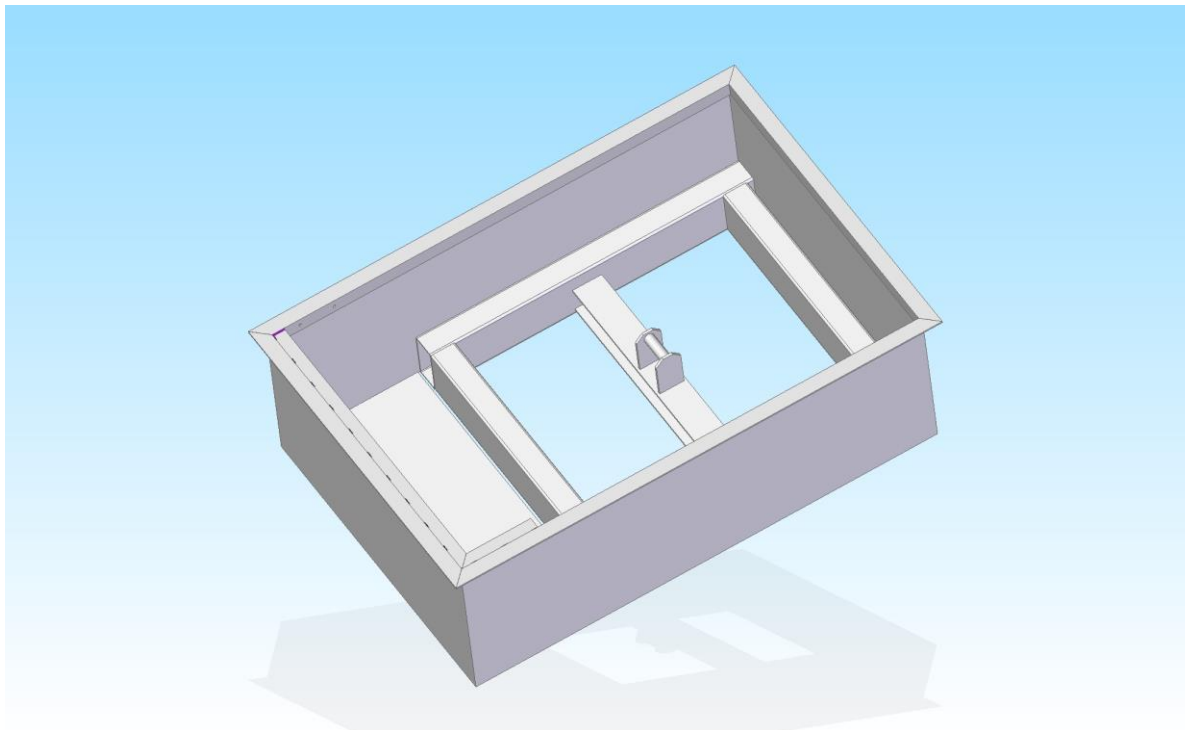
Metal frames to house the brake tester benches on the pit.

Optional code SRT067. Possibility to realize locally on the base of our drawings.



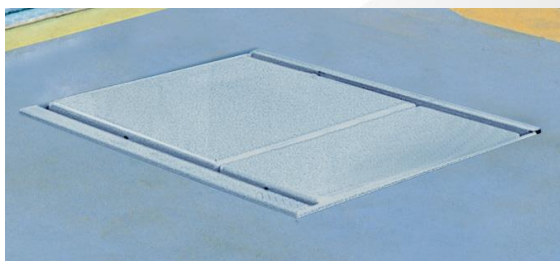
CANISTERS

Metal canisters for hosting the roller brake tester benches and simplifying the foundation works. Optional code SRT630A2.



AVAILABLE ACCESSORIES

- Side-slip tester (APF1510000)
- P1 and P2 air pressure detectors (SRT051BTH-TX/SRT052BTH-TX)
- Pedal pressure detector (SRT064BTH-TX)
- Walk-over covers (SRT630A1)
- Digital display repeater (SRT060D)




DVSA APPROVALS

The equipment is duly DVSA approved.

GEA GARAGE EQUIPMENT ASSOCIATION LIMITED
2/3 Church Walk, Daventry, Northamptonshire NN11 4BL UK
tel: +44 (0) 1327 312616 fax: +44 (0) 1327 312606
email: info@gea.co.uk website: www.gea.co.uk

CERTIFICATE OF ACCEPTANCE
Roller Brake Tester (HGV)
RBT Make and Model:
Space PFK600T/MOTV P/FP
Equipment Identification Number:
EINBR12316-0615024--
Software Version:
V1.40
Suitable to test:
HGV & PSV

This is to certify that the above RBT meets the requirements of the VOSA June 2011 HGV/PSV (Category M2; M3; N2; N3; O3; O4) Specification.

 2 July 2015
Chief Executive Date

For and on behalf of the Garage Equipment Association (GEA), administrators of the VOSA equipment approval scheme

For Manufacturers/Importers use


I certify that the test equipment of the above make and model, bearing the serial number:
Is installed at the following test facility and is suitable for HGV & PSV testing.

Authorised Testing Facility (ATF) Details:

Name
Address
Postcode

Supplier's Details:

Name Position
Signature Company



GEA GARAGE EQUIPMENT ASSOCIATION LIMITED
2/3 Church Walk, Daventry, Northamptonshire NN11 4BL UK
tel: +44 (0) 1327 312616 fax: +44 (0) 1327 312606
email: info@gea.co.uk website: www.gea.co.uk

CERTIFICATE OF ACCEPTANCE
Roller Brake Tester (HGV)
RBT Make and Model:
Space PFK500T/MOTV P/FP
Equipment Identification Number:
EINBR12316-0615022--
Software Version:
V1.40
Suitable to test:
HGV & PSV

This is to certify that the above RBT meets the requirements of the VOSA June 2011 HGV/PSV (Category M2; M3; N2; N3; O3; O4) Specification.

 2 July 2015
Chief Executive Date

For and on behalf of the Garage Equipment Association (GEA), administrators of the VOSA equipment approval scheme

For Manufacturers/Importers use

I certify that the test equipment of the above make and model, bearing the serial number:
Is installed at the following test facility and is suitable for HGV & PSV testing.

Authorised Testing Facility (ATF) Details:

Name
Address
Postcode

Supplier's Details:

Name Position
Signature Company

