



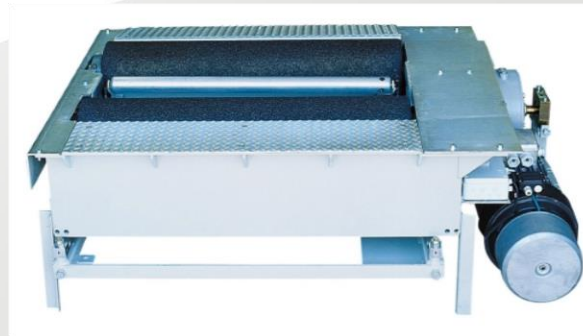
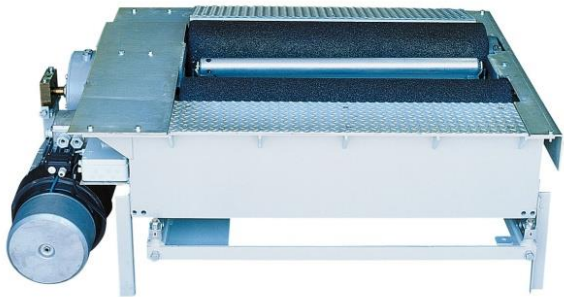
# CLASS V COMMERCIAL BRAKE TESTERS (*PFN500T/MOTVPF*)

## CLASS V COMMERCIAL BRAKE TESTERS



## BRAKE TESTERS FOR TRUCKS AND BUSES

The system is fully modular and is composed by a PC based control unit controlling a subsystem made of a **roller brake tester**



ROLLER BRAKE TESTER BENCHES

CONTROL  
UNIT



## CONTROL UNIT

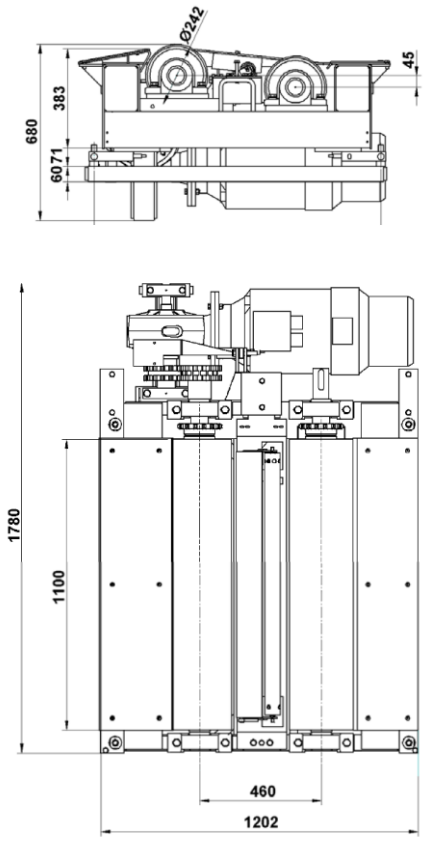


PC-base control unit with closed cabinet including:

- Complete electric system
- Latest technology PC, with HD
- Keyboard
- A4 printer
- 19" TFT monitor
- Remote control
- Electrical system for roller bench
- Emergency button
- VOSA database



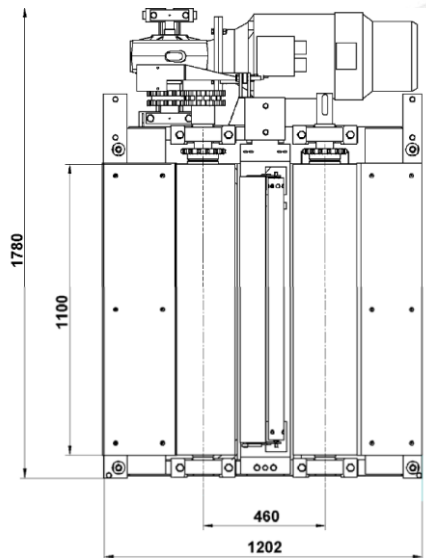
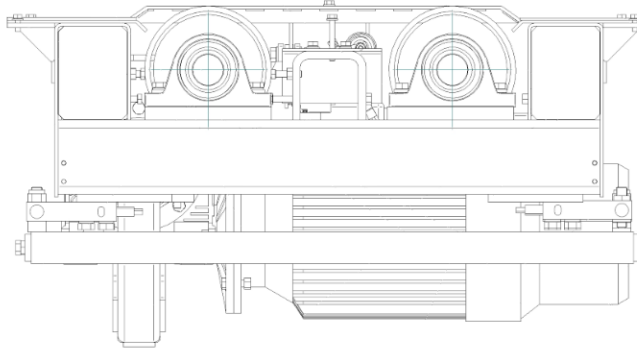
## OPTION 1 - BRAKE TESTER ROLLER BENCH (Class V)



Two separate extra-sturdy roller benches:

- Roller length 1100 mm
- Roller diameter 242 mm
- Max test weight per axle 16000 kg
- Motor-power 18.5+18.5 kW
- Roller speed 2.2 km/h
- Grip coefficient >0.75
- Max braking force 40000 N
- Silica-granule added resin coating
- Raised rear roller
- 8-cell weighing unit
- Self-braking motors
- For all Class V purposes

## OPTION 2 - BRAKE TESTER ROLLER BENCH (Class V + Class IV+VII)




Two separate extra-sturdy roller benches:

- Roller length 1100 mm
- Roller diameter 242 mm
- Max test weight per axle 16000 kg
- Motor-power 18.5+18.5 kW
- Roller speed 2.2 km/h
- Grip coefficient >0.75
- Max braking force 40000 N
- Silica-granule added resin coating
- Level rollers (bi-directional)
- 8-cell weighing unit
- Self-braking motors
- For all Class V purposes
- Suitable for Class IV and Class VII too

Hereunder some examples of the software main operations.





SPACE  
S.p.A.  
Via Spago, 48  
13100 Vercelli (VC) Italy

SPACE s.r.l.  
Via Spago, 48  
Trana (TO) ITALY

## Calibration report Brake tester data

Manufacturer: SPACE S.r.l.  
Model: 10000  
Serial number: 1000000000  
Manufacturing number: 1000000000  
Date of origin calibration: 31/12/2007

### Brake Force Lh

Speed (km/h)	Before calibration	After calibration	Calibration			Test engineer
			Limit	Date	OK	
0	200	200	200 ± 20	1/3/2007	✓	Test engineer
10			Checks			Test engineer
20			Limit	Date	OK	Test engineer
30			20 ± 2	1/3/2007	✓	Test engineer
40						Test engineer
50						Test engineer
60						Test engineer
70						Test engineer
80						Test engineer
90						Test engineer
100						Test engineer

### Brake Force Rh

Speed (km/h)	Before calibration	After calibration	Calibration			Test engineer
			Limit	Date	OK	
0	200	200	200 ± 20	1/3/2007	✓	Test engineer
10			Checks			Test engineer
20			Limit	Date	OK	Test engineer
30			20 ± 2	1/3/2007	✓	Test engineer
40						Test engineer
50						Test engineer
60						Test engineer
70						Test engineer
80						Test engineer
90						Test engineer
100						Test engineer

### Weight Lh

Speed (km/h)	Before calibration	After calibration	Calibration			Test engineer
			Limit	Date	OK	
0	200	200	12 ± 3	1/3/2007	✓	Test engineer
10			12 ± 3	1/3/2007	✓	Test engineer
20			Checks			Test engineer
30			Limit	Date	OK	Test engineer
40			12 ± 3	1/3/2007	✓	Test engineer
50						Test engineer
60						Test engineer
70						Test engineer
80						Test engineer
90						Test engineer
100						Test engineer

### Weight Rh

Speed (km/h)	Before calibration	After calibration	Calibration			Test engineer
			Limit	Date	OK	
0	273	200	1/3/2007	1/3/2007	✓	Test engineer
10			Checks			Test engineer
20			Limit	Date	OK	Test engineer
30			12 ± 3	1/3/2007	✓	Test engineer
40						Test engineer
50						Test engineer
60						Test engineer
70						Test engineer
80						Test engineer
90						Test engineer
100						Test engineer

### Side slip

Speed (km/h)	Before calibration	After calibration	Calibration			Test engineer
			Limit	Date	OK	
0			Checks			Test engineer
10			Limit	Date	OK	Test engineer

## REMOTE CONTROL APP

The TEST LANE Connect APP allows remote visualization and control of the complete system on a smartphone or tablet. The token file (right to use the APP is code SRT128).



## FOUNDATION FRAME KIT

Mandatory metal frame to house the brake tester benches on the pit.

Optional code SRT067. Possibility to realize locally on the base of our drawings.



# VOSA APPROVALS

The equipment is duly VOSA approved.

**GEA** GARAGE EQUIPMENT ASSOCIATION LIMITED  
2/3 Church Walk, Daventry, Northamptonshire NN11 4BL UK  
tel: +44 (0) 1327 312616 fax: +44 (0) 1327 312606  
email: info@gea.co.uk website: www.gea.co.uk

**CERTIFICATE OF ACCEPTANCE**  
**Roller Brake Tester (HGV)**

RBT Make and Model:  
**Space PFK600T/MOTV P/FP**

Equipment Identification Number:  
**EINBR12316-0615024--**

Software Version:  
**V1.40**

Suitable to test:  
**HGV & PSV**

This is to certify that the above RBT meets the requirements of the VOSA June 2011 HGV/PSV (Category M2; M3; N2; N3; O3; O4) Specification.

 2 July 2015  
Chief Executive Date

For and on behalf of the Garage Equipment Association (GEA), administrators of the VOSA equipment approval scheme

For Manufacturers/Importers use

I certify that the test equipment of the above make and model, bearing the serial number: .....  
is installed at the following test facility and is suitable for HGV & PSV testing.

Authorised Testing Facility (ATF) Details:

Name .....  
Address .....  
Postcode .....

Supplier's Details:

Name ..... Position .....  
Signature ..... Company .....



**GEA** GARAGE EQUIPMENT ASSOCIATION LIMITED  
2/3 Church Walk, Daventry, Northamptonshire NN11 4BL UK  
tel: +44 (0) 1327 312616 fax: +44 (0) 1327 312606  
email: info@gea.co.uk website: www.gea.co.uk

**CERTIFICATE OF ACCEPTANCE**  
**Roller Brake Tester (HGV)**

RBT Make and Model:  
**Space PFK500T/MOTV P/FP**

Equipment Identification Number:  
**EINBR12316-0615022--**

Software Version:  
**V1.40**

Suitable to test:  
**HGV & PSV**

This is to certify that the above RBT meets the requirements of the VOSA June 2011 HGV/PSV (Category M2; M3; N2; N3; O3; O4) Specification.

 2 July 2015  
Chief Executive Date

For and on behalf of the Garage Equipment Association (GEA), administrators of the VOSA equipment approval scheme

For Manufacturers/Importers use

I certify that the test equipment of the above make and model, bearing the serial number: .....  
is installed at the following test facility and is suitable for HGV & PSV testing.

Authorised Testing Facility (ATF) Details:

Name .....  
Address .....  
Postcode .....

Supplier's Details:

Name ..... Position .....  
Signature ..... Company .....

